

# FLECK® 5800 VALVE

## LEADING THE EVOLUTION

WATER SOLUTIONS | FLECK® 5800 VALVE EVOLUTION BROCHURE

### WATER PURIFICATION

5730 NORTH GLEN PARK ROAD, GLENDALE, WI 53209 [WWW.PENTAIRONDEMAND.COM/PRO](http://WWW.PENTAIRONDEMAND.COM/PRO)  
P: 262.238.4400 | 800.279.9404 | F: 262.518.4404

All Pentair trademarks and logos are owned by Pentair, Inc. All other brand or product names are trademarks or registered marks of their respective owners. Because we are continuously improving our products and services, Pentair reserves the right to change specifications without prior notice.

Pentair is an equal opportunity employer.

© 2012 Pentair, Inc. All Rights Reserved.



43441 REV A NV12

# FEATURE-RICH, FLEXIBLE AND DEPENDABLE

## A GREAT TRADITION JUST GOT BETTER.

The Pentair® Fleck® 5800 Series of control valves sets a brand new standard for adaptability and innovative features. At the same time, they come from a company known for decades of expertise in the water industry, millions of units in service, and a tradition of rock solid reliability.

This combination spells success for residential water conditioning dealers. It brings together the features homeowners prefer with the time-tested component designs professionals can trust for years of customer satisfaction.

**Stronger flow rates** – 21 gallons/minute continuous, 27 GPM peak, 17 GPM backwash

**Faster setup time** – 10,000 RPM fast-positioning motor with 12 volt DC drive

**Soft water refill** – for better brine saturation and a cleaner brine tank

**Time of day backup** – a built-in super capacitor maintains system data up to 12 hours after a home power outage

**Easy servicing** – cartridge-based seal and spacer design for quick and easy replacement

**Optical technology** – optical sensors control the backwash cycle for trustworthy, precise performance

**Clear backlit display** – easy visibility for homeowners or service personnel... even in a dark basement



## PENTAIR® FLECK® HERITAGE

For over a half century, Pentair and Fleck have led the advance in control valve technology for water treatment and filtration applications. The 5800 was designed to continue this tradition of technological leadership.

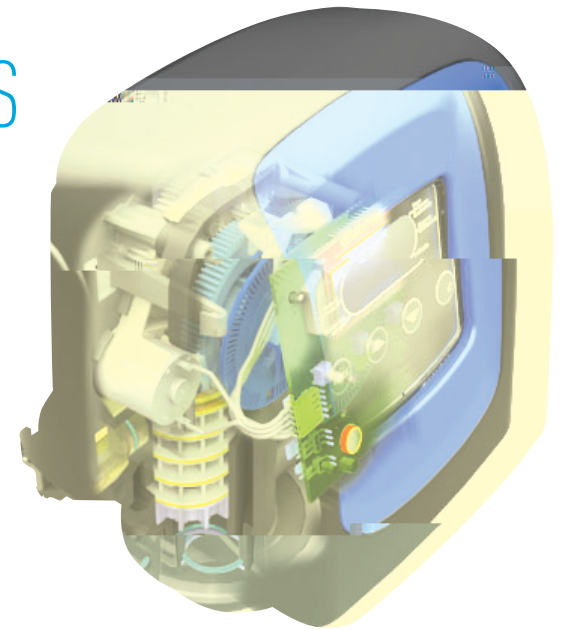
Generations of water industry professionals have seen good reason to stand behind Pentair and Fleck. The 5800 was created to keep this proud legacy of partnership continuing for generations to come.



# ONE VALVE, MULTIPLE OPTIONS

There is no need to stock a variety of control valves for filter or softener applications with the Pentair® Fleck® 5800. Every single 5800 was engineered to adapt easily to a wide variety of residential water system configurations.

- Effective in both upflow or downflow systems
- Choose from metered or time clock regeneration
- Bypass valves of fiber reinforced polymer or stainless steel
- Your choice of plumbing yoke connections: .75", 1", 1.25" NPT, BSP and Sweat

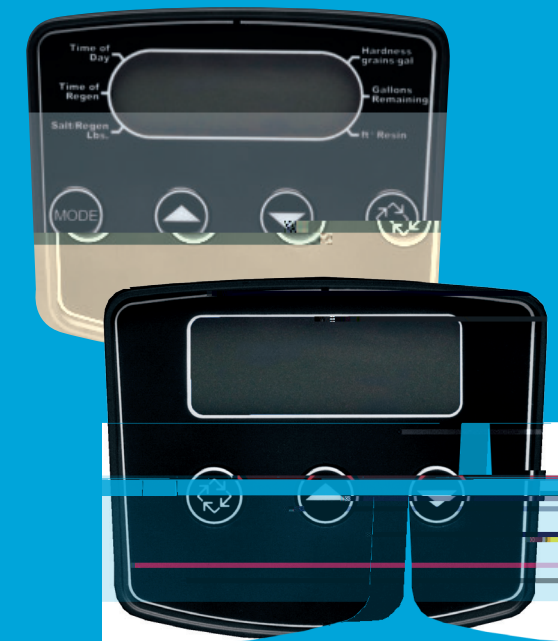


# PLUG-AND-PLAY CONTROLLERS

Transform an ordinary system into a premium performer simply by changing controllers, thanks to the Pentair Fleck 5800's two interchangeable XT Series controller modules. All two modules attach to the valve with the same plug-and-play connector, making it easy to give homeowners a choice of timer features and functionality:

**LXT** – midsize LCD display programs easily, pre-programmed for your choice of time clock or metered softener regeneration

**SXT** – large LCD display and user-selectable time clock or metered function; usable for filtration or softener systems



Three bezel colors to match other system components or create your own unique brand identity



BLACK



BLUE



SILVER